

# TLC Trumpet



*Keeping you informed and sharing our experience, strength & hope in the love of Christ*

Volume 10 No. 1

[www.thanksgivinglutheran.org](http://www.thanksgivinglutheran.org)

January 2013

## Pastor's Page

**G**race to you and Happy New Year again! I just heard on the radio yet another report about people losing power in a storm. Now, it could have been the pressure of creating a pastor's page already past the deadline or it could have been spiritual inspiration, but it occurred to me immediately that we never lose the power of Spirit! No storm can cut us off from the Rock of our salvation, our means to live without having to grip tightly to fear of sin and death, our means to live abundantly, eternally.

Thank you, amazing and graceful God!

As you move into another year, may your heart open wider and wider to the peace and strength of Spirit. May you let problems be opportunities to gain experience. May you use

the keys of forgiveness to restore broken relationships. May you fan the fires that bring justice and equality into the world. May you have a more open heart for the poor and the oppressed.

And, okay, okay – have to say it may you bring that energy into the ministries of Thanksgiving so that more and more folks can know that we are here and what a wonderful faith community we are!

Pray for and support your new Council: Lisa Bartlett, Keith Becker, Jordan Eberly, Cindy Heiller, Barbara Kling, Mary Weber.

Hey, if you haven't served on a committee yet, join one!

Determine to attend the congregational meeting on January 20.

Okay, okay, I'll stop now. Just know that you are essential to Thanksgiving. Okay? Okay.

### In This Issue

Pastor's Page.....	Page 1
Group News .....	Page 3
Jean's Jots.....	Page 3
January Worship Highlights.....	Page 4
Financial News.....	Page 5
Who's Who.....	Page 6
Calendar .....	Page 7

*Love,  
Pastor Jean*

## Next Trumpet Deadline!

The next TLC Trumpet deadline will be Thursday, January 24. Editor requests articles be no longer than 500 words. Please email submissions to:

tlcsantarosa@sbcglobal.net

If you do not have email, place submissions (along with your name in case any clarification is needed) in Dorothy's inbox.

Pastor Jean Lebbert: 707-327-6292

Church office: 707-544-0241

### Worship:

Sunday morning at 9:30 with Holy Communion

Thanksgiving Lutheran Church

1225 Fulton Road, Santa Rosa, CA 95401

email: tlcsantarosa@sbcglobal.net

### January hours for our administrative assistant

Church office hours are Monday, Tuesday, and Thursday from 10-1, and Friday 11-2.



### Happy New Year and Happy Birthday to:

Michelle Eisenhart	1/12
Kier Skinner	1/15
Joan Hax	1/19
Lucy Reed	1/21

### TLCers are truly a generous and giving group

The total given for the Thanksgiving Holiday was \$2,180. This money went directly to Mission Investment towards paying down the principal on our budget. We are making great progress in that endeavor.

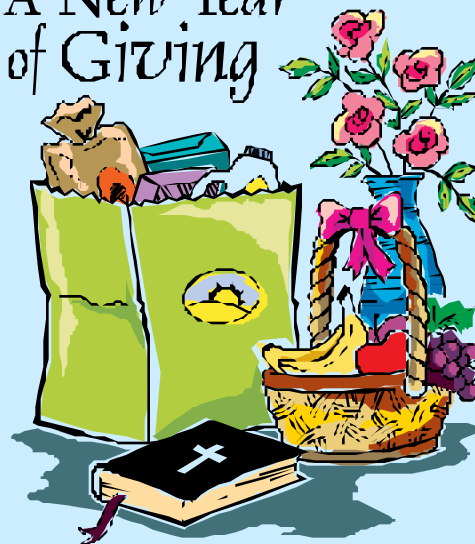
For 2012 through the end of December TLCers gave \$810 to various Second mile groups and \$1,168.01 to the Rwanda School Project. We gave to other groups earlier in the year. There will be a detailed accounting in the Annual Report.

We honored Pastor Jean on her 60th birthday with checks totaling \$190 for the ELCA Disaster Relief Fund and numerous gift items for FISH who feed the hungry locally.

So far Christmas gifts of \$1,095.50 have been given. These gifts will go to Lutheran Social Services of Northern California. All of this money goes directly to help those in need in our area. None of it goes for administrative or publicity purposes.

TLCers are truly a generous and giving group. Thank you.

### A New Year of Giving



## TLC Group News



### Christian Education Sunday

Many thanks to Jordan Eberly for presenting Adult Forums in November and December. We all enjoyed learning the Five Finger Prayer technique and sharing Christmas customs. In January Sandy Koppen returns as leader, this time with a series on the Women in the book of Acts. The first one is January 27th after church and fellowship time. All are welcome.

### HHR Planning for 2013

Heavenly Hell Raisers will meet January 24th, 6pm, at TLC HHR to make plans for the New Year! Pot Luck of course!!

### Sharing Our Facility

For a number of years we have shared our facilities with Casa Del Alfarero Church. This has come to an end. We would like to find another nonprofit group or groups willing to donate for using our facilities on a regular basis. Currently there are AA groups here on Monday evenings and Saturday mornings and NA groups on Tuesday evenings. Space is available during the days and on other evenings. If you know of such a group please contact Keith Becker.

### Potluck Supper and Communion

Join us for a potluck supper, prayers and communion on Thursday, January 17th at 6:30 pm. Everyone is welcome with or without a dish, there is always plenty of food to share. Sharing a meal and then communion around the supper table with dear people is a wonderful experience. Be sure to be there!

## Jottings From Jean Flak....

Joan Hax's son, Gary is recovering nicely from hip surgery, thanks for all your prayers....Pastor Jean's birthday party was great....Astrid Anderson and Jean Flak enjoyed the Tallis Scholars at the Green Music Center....thanks to those who were willing to be on the Church Council - Cindy Heiller and Barbara Kling and Keith Becker for a second term....don't forget to sign up for the Women's Retreat....Luci Arpi is battling a shoulder problem, maybe surgery....Diane Land is going through Chemo - pray for these folks and others in your life....Barbara Kling is spending Christmas with her sister in Fremont....Ashley Stonebreaker and Brandy Hedrick are visiting in Montana....Michelle Eisenhart is going on a cruise to celebrate her birthday - maybe, her boss isn't cooperating....don't forget about the Seniors in Transition seminar that starts at 2 p.m. on the 8th of January....Blue Christmas service was very nice and thoughtful - thank you Pastor Jean!....prayers for Deb Ferranato and family because of the death of her father....hope everyone had a blessed Christmas and New Year!

## Worship in January

**January 6** is Epiphany, the 12<sup>th</sup> day of Christmas, complete with Bethlehem star, magi from the east, and perhaps a visit from your favorite camel, Caiaphas. We will also install the 2013 TLC Council: Lisa Bartlett, Keith Becker, Jordan Eberly, Cindy Heiller, Barbara Kling, and Mary Weber.

**January 13** is the day we remember the Baptism of Jesus. It's also the conclusion of the annual TLC Women's Retreat at Bishop's Ranch, so TLC will be worshipping in two locations that day!

On **January 20**, we will hear the account from the Gospel According to John of the wedding at Cana – the first of Jesus' signs in the fourth Gospel. It is also the second part of our annual congregational meeting, so please plan to stay a little extra longer to participate in the decisions of your faith community.

**January 27** is the day we will join with many, many other congregations in RIC Sunday. Tim Feiertag was part of the team that created special parts of the liturgy for that day, which we will be incorporating into our worship, and we will have guest speakers! It's also Christian Education Sunday, so you will want to plan to stay a little longer this Sunday too for the adult forum led by Sandy Koppen. Her topic for the next few months is Women in the Book of Acts.



## F.I.S.H. - Friends in Service Here

A little review and for those of you who are new here at TLC, F.I.S.H. is one of the food distribution places for people in need in Sonoma County.

F.I.S.H. is open 5 days a week from 10 A.M. until 2 P.M. and Saturday mornings from 10:30 until 12:30. Anyone is welcome after calling in the size of their family and any special needs they may have. The only requirement is a F.I.S.H. ID card obtained on their first visit and a personal ID.

This food pantry is run entirely by volunteers and funded by donations and an occasional grant. A couple of the businesses who donate overstocks of food items are Safeway and Trader Joes. F.I.S.H. buys almost all of its canned goods from the Redwood Empire Food Distribution facility in Santa Rosa.

Everyone who comes is given a bag or two (depending on size of family) of basic food items. Those are: Canned Fruits and Vegetables, Tuna,

Cereal, Macaroni and Cheese, Spaghetti, Tomato Sauce, Canned Beans, Soup, Bread, Rice and Peanut Butter. They can choose a couple of items from a shelf at the door filled with odd items such as jell-o or pudding packages, packaged dinners to toothpaste, aspirin, baby items, food supplements for seniors and sometimes even some pet foods.

Large paper bags with and without handles are needed so don't throw them in your recycle bin – put them in the barrel in the Narthex.

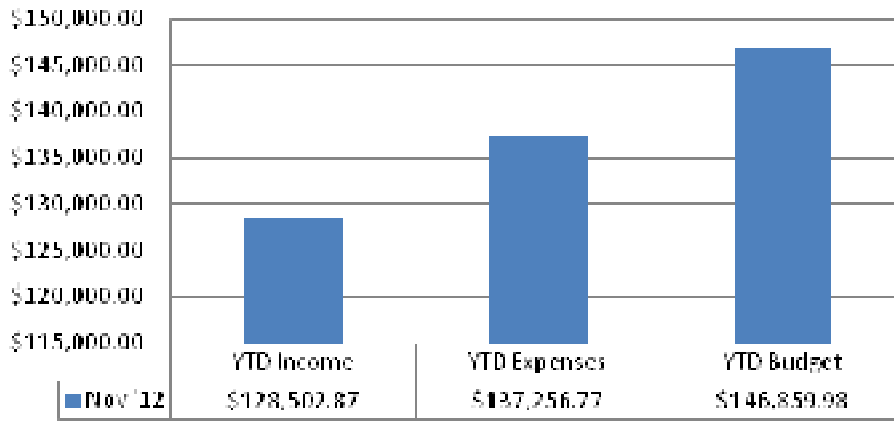
The BLUE BARREL in the Narthex is pretty big but the goal is to fill it as often as we can.

F.I.S.H. is located on the corner of North and Benton Streets on a month to month basis until a new home is found. If you have some extra time and would like to get out of the house F.I.S.H. is always in need of volunteers.

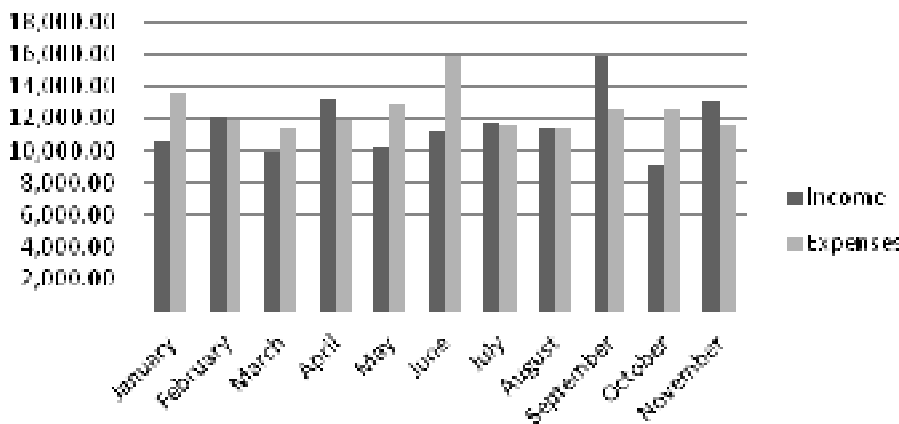
Any questions? Call Marilyn.



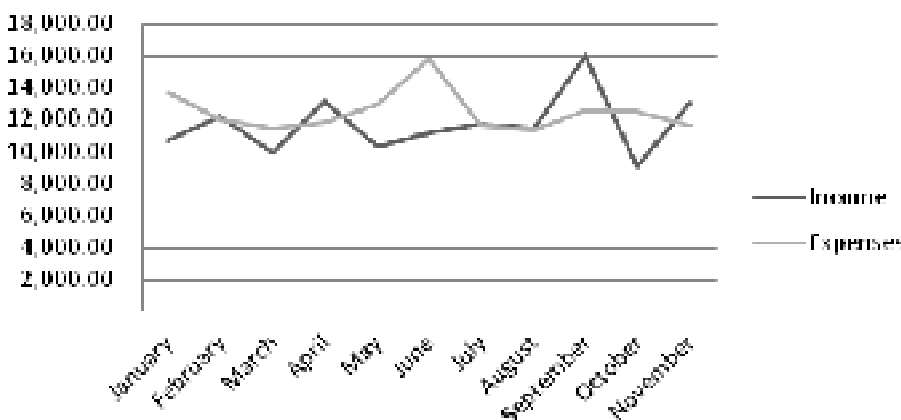
### November 2012



### Income & Expenses 2012



### Jan-Nov Income & Expenses



## Finance Update

Financially the year ended on an upbeat note for TLC. We were in the black for November by \$1,408.06. The year to date deficit through the end of November was at \$8,739.90 which is an average of \$794.54 per month. December will also be in the black but the final figure is not yet known. All of the bills are paid and there is money in savings. However, the amount in savings is dwindling and we adopted a deficit budget for 2013. Please keep these matters in your thoughts, planning and prayers.

Many thanks to all who have kept their pledges current, to those who generously increased their pledges, to all who have given that extra amount above and beyond their pledges, to all who use Good Search and Good Shop on their computers, to those who designate their Thrivent giving and e scrip giving to TLC, and to those who recycle their ink cartridges through us at Office Depot for credit towards office supplies. Every penny helps the bottom line. Many thanks also to all committees who carefully watch their spending. Together we do make it work as we do God's work.

**TLC Executive Committee:**

Keith Becker, President  
, Vice-president  
Jean Harrison, Treasurer  
Mary Thompson, Financial Secretary

**Council Liaisons to Committees:**

Christian Education	Jordan Eberly
Congregation and Community Care	Lisa Bartlett
Finance	
Outreach and Evangelism	Mary Weber
Property	Keith Becker
Stewardship	Keith Becker
Worship and Music	
Youth (in hiatus)	

**Committee Chairs**

Christian Education	Jean Harrison
Congregation and Community Care	Jordan Eberly
Finance	Jean Harrison
Mutual Ministry	Pastor Jean Lebbert
Outreach and Evangelism	Jan Thomas
Property	Jan Loewen
Stewardship	Keith Becker
Worship and Music	Mary Thompson
Youth (in hiatus)	

## Who's Who In Worship

**Altar Guild Coordinator:**

Diane Land

**Greeters Coordinator:**

Jan Thomas

**Asst. Ministers Coordinator:**

Ingrid Feiertag

**Musicians Coordinator:**

Mark Koppen

**Offering Teller Coordinator:**

Paul Feiertag

**Readers Coordinator:**

Ingrid Feiertag

**Ushers Coordinator:**

George Land

## Who's Who In Special Taskforces

**Community Garden Coordinator:**

Karen Lehman

**Landscaping Coordinator:**

Jean Harrison

**Quilters Coordinator:**

Gloria Feiertag

**Women's Retreat Coordinator:**

Karen Lehman





**Please Support Those  
who Support Us**



At the Mission Investment Fund, we use the money you invest to fund building and renovation loans for ELCA congregations and related ministries. Give us a call at 877.886.3522

# January 2013 at Thanksgiving Lutheran



Sunday	Monday	Tuesday	Wednesday	Thursday	Friday	Saturday
<b>30</b> <b>9:30 AM</b> Sunday Morning Worship	<b>31</b>  <b>12:00 PM</b> Alathon - until midnight <b>7:00 PM</b> Alcoholics Anonymous	<b>1</b> <b>8:00 AM</b> Alathon - until 9pm <b>6:00 PM</b> Narcotics Anonymous small group <b>8:00 PM</b> Narcotics Anonymous	<b>2</b>	<b>3</b>	<b>4</b>	<b>5</b> <b>10:00 AM</b> Alcoholics Anonymous
<b>6</b> <b>9:30 AM</b> Sunday Morning Worship	<b>7</b> <b>7:00 PM</b> Alcoholics Anonymous	<b>8</b> <b>1:00 PM</b> Bible Study <b>2:00 PM</b> Seniors In Transition <b>6:00 PM</b> Narcotics Anonymous small group <b>8:00 PM</b> Narcotics Anonymous	<b>9</b>  <b>6:30 PM</b> Property Meeting	<b>10</b>	<b>11</b> TLC Women's Retreat at Bishop's Ranch	<b>12</b> TLC Women's Retreat at Bishop's Ranch <b>10:00 AM</b> Alcoholics Anonymous
<b>13</b> TLC Women's Retreat at Bishop's Ranch <b>9:30 AM</b> Sunday Morning Worship	<b>14</b> <b>4:15 PM</b> Christian Ed Meeting <b>7:00 PM</b> Alcoholics Anonymous	<b>15</b> <b>1:00 PM</b> Bible Study <b>2:00 PM</b> Seniors In Transition <b>6:00 PM</b> Narcotics Anonymous small group <b>8:00 PM</b> Narcotics Anonymous	<b>16</b> Conference Deans Retreat	<b>17</b>  <b>6:30 PM</b> Monthly Potluck	<b>18</b>	<b>19</b> <b>10:00 AM</b> Alcoholics Anonymous <b>10:00 AM</b> Finance Committee Meeting
<b>20</b> <b>9:30 AM</b> Sunday Morning Worship <b>10:45 AM</b> Congregational Meeting	<b>21</b> <b>7:00 PM</b> Alcoholics Anonymous	<b>22</b> <b>1:00 PM</b> Bible Study <b>2:00 PM</b> Seniors In Transition <b>6:00 PM</b> Narcotics Anonymous small group <b>8:00 PM</b> Narcotics Anonymous	<b>23</b>	<b>24</b>  Trumpet Deadline <b>6:00 PM</b> HHR Potluck and planning meeting	<b>25</b>	<b>26</b> <b>10:00 AM</b> Alcoholics Anonymous
<b>27</b> <b>9:30 AM</b> Sunday Morning Worship <b>12:00 PM</b> Council	<b>28</b> <b>7:00 PM</b> Alcoholics Anonymous	<b>29</b> <b>1:00 PM</b> Bible Study <b>2:00 PM</b> Seniors In Transition <b>6:00 PM</b> Narcotics Anonymous small group <b>8:00 PM</b> Narcotics Anonymous	<b>30</b>	<b>31</b>	<b>1</b>	<b>2</b> <b>10:00 AM</b> Alcoholics Anonymous